

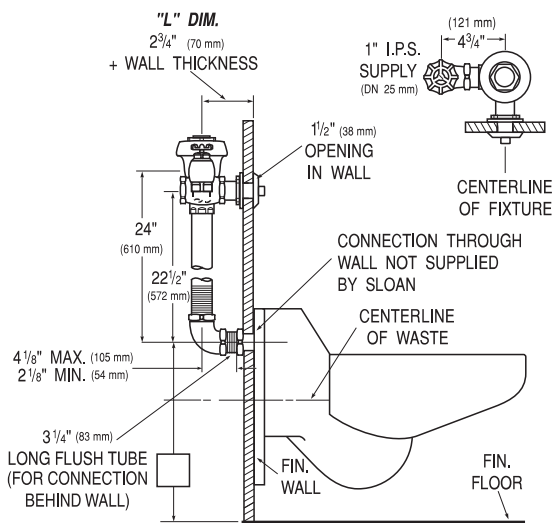
Royal® Prison Model Flushometer

611



- ▶ **Description**
Concealed Water Closet Flushometer, for wall hung stainless steel back inlet bowls.
- ▶ **Flush Cycle**
 - Model 611 Water Saver (3.5 gpf/13.2 Lpf)
 - Model 611-1.6 Low Consumption (1.6 gpf/6.0 Lpf)
- ▶ **Specifications**
Quiet, Concealed, Diaphragm Type, Rough Brass Closet Flushometer for either left or right hand supply with the following features:
 - PERMEX™ Synthetic Rubber Diaphragm w/Dual Filtered Fixed Bypass
 - Metal Direct Acting, Non-Hold-Open Push Button with a Triple Seal Handle Packing
 - 1" I.P.S. Wheel Handle Bak-Chek™ Angle Stop
 - Adjustable Tailpiece
 - High Back Pressure Vacuum Breaker
 - Elbow Flush Connection and Coupling for 1½" NPT Back Inlet (for connection in the pipe chase — flush connection through the wall not provided by Sloan)
 - Sweat Solder Adapter
 - Exposed parts Chrome Plated
 - High Copper, Low Zinc Brass Castings for Dezincification Resistance
 - Non-Hold-Open Push Button, Fixed Metering Bypass and No External Volume Adjustment to Ensure Water Conservation
 - Flush Accuracy Controlled by CID™ Technology
 - Diaphragm, Handle Packing, Stop Seat and Vacuum Breaker molded from PERMEX™ Rubber Compound for Chloramine Resistance
 - 100% of the energy used in manufacturing is offset with Renewable Energy Sources – Wind Energy

Valve Body, Cover, Tailpiece and Control Stop shall be in conformance with ASTM Alloy Classification for Semi-Red Brass. Valve shall be in compliance to the applicable sections of ASSE 1037.
- ▶ **L Dimension**
Specify the "L" Dimension for the proper length of the Actuator Assembly. The "L" Dimension is equal to the Wall Thickness (to the nearest whole inch) plus 2¾".
- ▶ **Variations**
 - AFD** Shorter Vacuum Breaker — for use with Anti-Flood Device (Anti-Flood Device NOT provided by Sloan) *Not required for use with Bradley Flood Buster®
 - ES** Solenoid Operated (specify 24 VAC or 120 VAC)
 - ESM** Solenoid Operated with Modular Plug for use with Sloan PWT Systems (24 VAC only)
 - J** Metal Oscillating Handle
 - TP** Trap Primer Elbow
 - WB** For installation with Sloan Easy Access® Wall Box
 - L3** 3" Metal Oscillating Push Button



 Listed by I.A.P.M.O.

Made In The
USA







Sloan Valve Company is buying renewable energy certificates to meet 100% of the company's purchased electricity use at its Franklin Park, Illinois facility.

This space for Architect/Engineer approval

The information contained in this document is subject to change without notice.